

# Are You?

- Guardian of a relative's child?
- An adoptive parent ?
- Guardian of a friend's child?

**You are not alone!  
You could be eligible for  
support and assistance.**

**Participation is FREE**



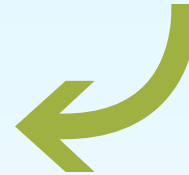
**Child Care Coordinating Council  
of the  
North Country**

## Contact Us!

Juliette Lynch, or  
Katie Schrader  
518-561-4999  
1-800-540-2273  
Fax: 518-561-6956

Email: [permanencyresourcecenter@gmail.com](mailto:permanencyresourcecenter@gmail.com)

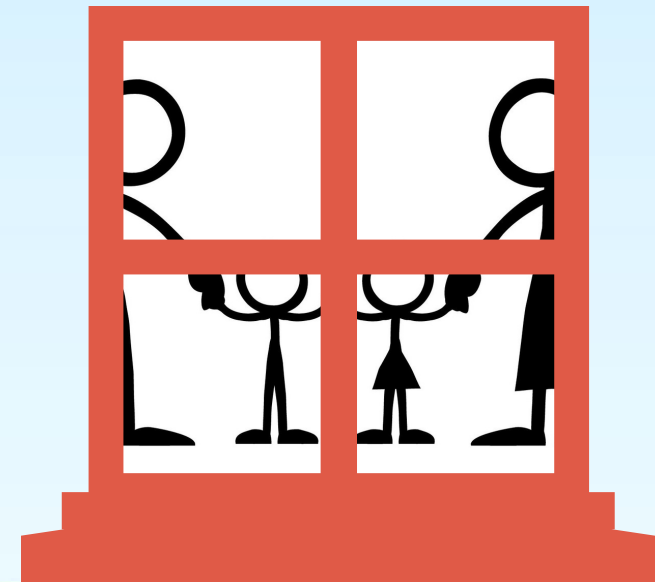
Website: [www.cccnc.org](http://www.cccnc.org)



# Family Forever!

## Adoptive and Kinship Families of the North Country

Permanency Resource Centers



Serving Post Adoptive, and  
Post Legal Guardianship  
Families in Clinton, Essex,  
Franklin, Hamilton, and St.  
Lawrence Counties and Saint  
Regis Mohawk Tribe



**Office of Children  
and Family Services**

## **Family Forever!**

### **Adoptive and Kinship families of the North Country**

Permanency Resource Centers

Participation is completely voluntary and enrolling is easy!

### **How?**

Call 518-561-4999 or 1-800-540-2273  
we will schedule a time for you to meet with one of our Program Coordinators

### **Where?**

We can meet at your home, or at one of our family resource centers, or another convenient location!!

## **Our Services**

### **Referral Services-**

We can help you find what you need in the community

### **Advocacy-**

We help accompany you to Court, DSS, School meetings, and more

### **Respite Care-**

Fun activities for children and child care while you enjoy some free time!

### **Support Groups-**

A confidential and positive experience with others who understand what you are going through

### **Educational Workshops-**

Info on topics relevant to you including parenting, health, mental health, and self care

### **Home Visits-**

We come to you and help you in the comfort of your own home

### **Youth Programs-**

An opportunity for youth to engage in constructive and fun activities with other youth who have had similar experiences

## **Who may be eligible?**

Post Adoptive, Kinship, and Post Legal Guardianship Family living in Clinton, Essex, Franklin, Hamilton, Saint Regis Mohawk Tribe, and St. Lawrence Counties

